

# USER MANUAL

PROTECTIVE COVER

REVISION 3



**AKVA**GROUP™  
EGERSUND NET

# THANK YOU FOR CHOOSING EGERSUND NET

Our mission is to deliver solutions and services that optimise production and contribute to sustainable, cost-effective and safe fish farms. We place great emphasis on fish welfare, operational performance and profitability for our customers in everything that we do.

A protective cover is equipment that is used when a top net is being fitted to or removed from a floating collar. It is fitted as a cover on the water's surface within the floating collar. Protective covers can be manufactured in various sizes to suit different sizes of floating collar. The purpose of the protective cover is to ensure that no fish become caught in the top net.

Egersund Net is committed to producing high-quality, durable protective covers, and we describe how they should be used in this user manual.

This user manual is designed to meet the requirements of Norwegian Standard 9415:2009 and the NYTEK regulations.

We keep our manuals as user-friendly as possible. To achieve this, we rely on your feedback and on our collaboration with you as a user of our products. We highly value every suggestion we receive, as it helps us deliver more effective and safer equipment. You are most welcome to contact us if you have any comments or suggestions for improvement.

The user manual for protective covers is available on our website [www.egersundnet.no](http://www.egersundnet.no), and on our online equipment log Net-Reg at [www.net-reg.no](http://www.net-reg.no).

Together, we can help ensure that fish farming is an eco-friendly, sustainable and growing industry that produces safe and healthy seafood for the global market.

Warm regards,  
Egersund Net

# CONTENTS

<b>1</b>	<b>Introduction.....</b>	<b>4</b>
1.1	About the product.....	4
1.2	Symbol definitions .....	4
1.3	Contact information .....	5
1.4	Identification of protective covers .....	5
<b>2</b>	<b>CONSTRUCTION.....</b>	<b>6</b>
<b>3</b>	<b>OPERATION AND MAINTENANCE .....</b>	<b>7</b>
3.1	Using protective covers .....	7
3.2	Risk assessments/special environmental conditions .....	8
3.3	Maintenance .....	8
3.4	Check list .....	9

# 1 INTRODUCTION

## 1.1 About the product

Our protective cover is manufactured from nylon netting, and the weight is kept to a minimum by using thin thread. It is designed to be somewhat oversized in relation to the floating collar. Ropes and floats are fitted around the perimeter.

Diagonal ropes with floats can be fitted, which can be covered with netting. Diagonal ropes have a plastic-coated loop at each end used to drag the net. Loops are also fitted evenly distributed around the cover's circumference rope.

## 1.2 Symbol definitions



**REQUIREMENT:** The symbol is placed next to text describing requirements



**NOTE:** The symbol is placed next to text describing potential incidents and other aspects that you should be aware of



**TIP:** This symbol describes tips and advice in connection with the installation and handling of a protective cover



**ESCAPE RISK:** This symbol is placed next to text describing events and/or operations that may increase the risk of fish escaping

## 1.3 Contact information

If you have any questions about the protective cover, please feel free to contact us.

Delivery- and visiting address:

Egersund Net AS

Svanavågveien 30

NO-4374 Egersund

Tel: + 47 51 46 29 60

E-mail: [post@egersundgroup.no](mailto:post@egersundgroup.no)

[www.egersundnet.no](http://www.egersundnet.no)

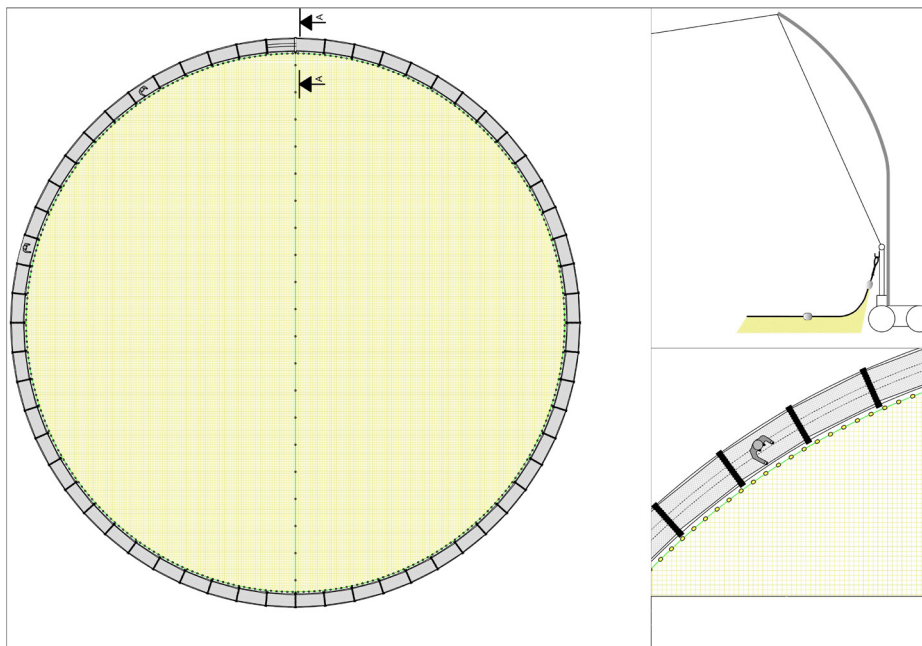
## 1.4 Identification of protective covers

Protective covers are labelled with:

- Contact information for Egersund Net
- Unique ID number
- Size



# 2 CONSTRUCTION



# 3 OPERATION AND MAINTENANCE

## 3.1 Using protective covers

- Thread a rope around the hand rail of the floating collar, on the opposite side to the work boat. Then bring the rope back to the boat.
- Fix one end of the rope to the plastic-coated loops on the protective cover, located at each end of the diagonal rope.



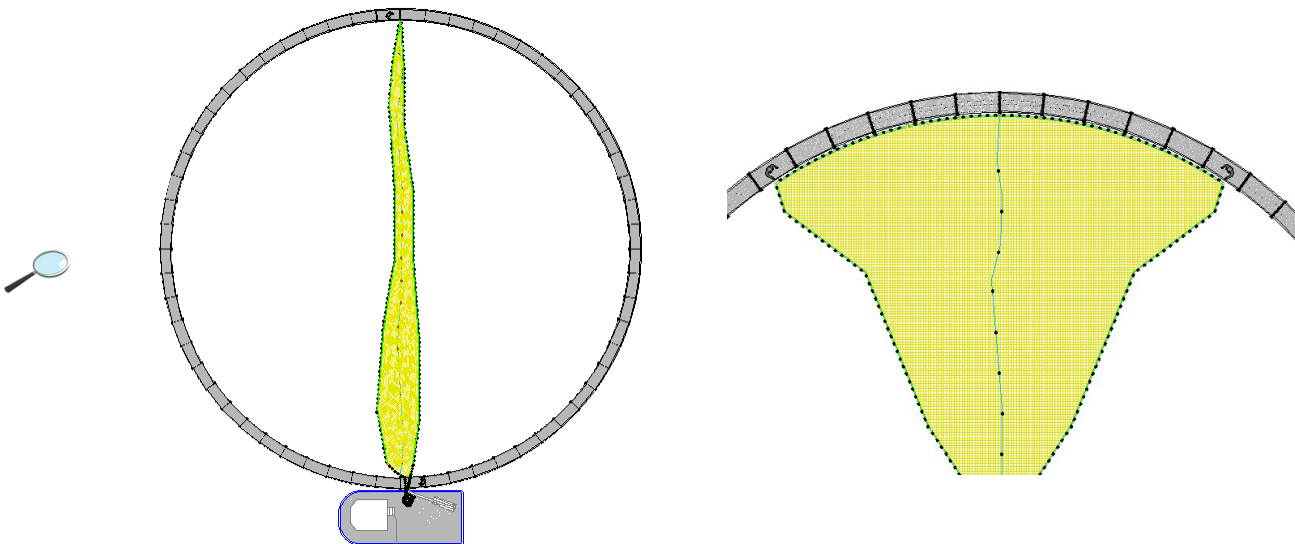
Remember to make sure that the floats face down to sea, to prevent the top net from getting stuck. Alternatively, netting can be fitted over the floats.

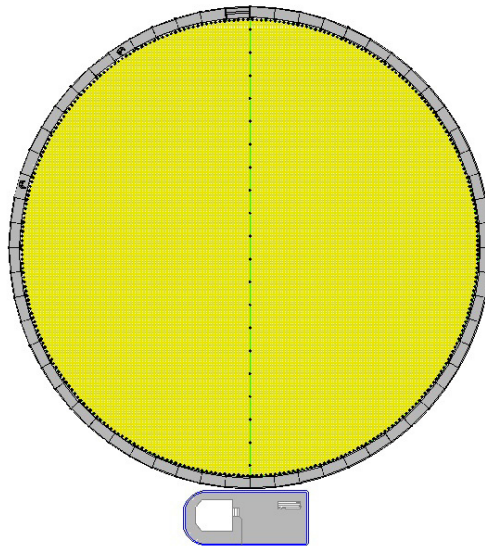
- Pull the cover across the floating collar. This prevents fish from leaping up onto the cover.
- Once the cover has reached the opposite side, two people working together should walk in opposite directions around the floating collar, hanging the cover up.



Once the operation has been completed, the cover can be returned to the boat for storage.

- The cover must always be set out in the SAME direction as the current.





## 3.2 Risk assessments/special environmental conditions



Protective covers must only be used when weather and current conditions permit. Personnel with the appropriate experience and competence must be responsible for the operation.

Approved lifting equipment must be used when lifting a protective cover with a crane. Protective covers must be removed from the net after use, to prevent wear and tear on components in the net.

## 3.3 Maintenance



When the protective cover is not in use, it should be stored properly so that it is not damaged.

We recommend using tanks/box for storage, transport and disinfection. This will help prevent the cover from being exposed to sunlight, and will extend its life.

When the cover is no longer needed, it can be returned to any Egersund Net service facility to be processed in accordance with applicable waste management procedures.



### 3.4 Check list

Before the protective cover is used, it must be checked to ensure that it has no damage that may cause damage or holes in the net.

Check the following points before use:



Check item	What to inspect
Chafing	Check that there is no wear and tear to ropes, floats or loops.
Sharpe edges	Check that there is no damage to components of the protective cover, such as the plastic protection on loops, that could cause holes in the net.



**AKVA**GROUP™  
EGERSUND NET