

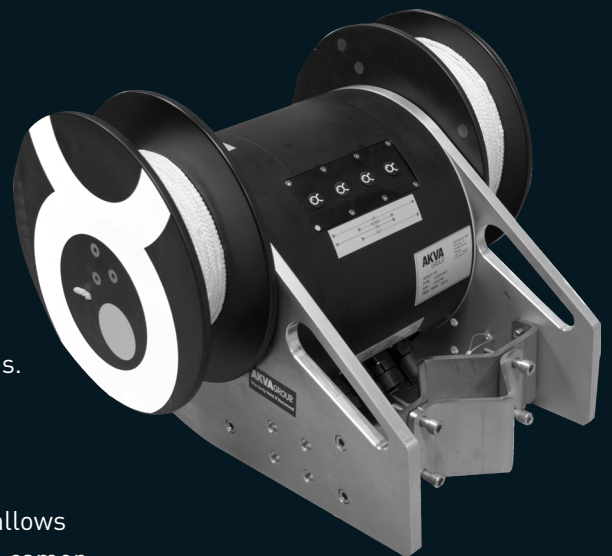
AKVA winch V-Series

The AKVA winch V-Series is explicitly designed for demanding deep-sea and cage-based environments.

Built for durability, precision, and reliable performance, it excels even in harsh environmental challenges. Integrated seamlessly with AKVA connect platforms, the V-Series Winch provides advanced remote control capabilities, operational flexibility, and streamlined monitoring for optimal aquaculture management.

Key features:

- Remote-controlled winch adjustment for flexibility.
- Locking mechanism maintains camera position.
- Dual-speed control for precise camera positioning.
- Automatic safety shutdown with programmable security feature.
- Optional oxygen sensor integration for better monitoring.
- LED indicators on buttons for easy use.
- Lag controller for accurate real-time camera tracking within cages.
- Automatic night sinking for lower cameras.
- Online software updates for continuous improvements.
- Compatible with AKVA connect 2, AKVA connect 4, AKVA observe allows unified management of winches, feeding equipment, sensors, and cameras.
- Enables the operator to quickly position the camera at predefined locations



Technical specifications:

Dimensions L x W x H:	210 x 400 x 400 mm
Weight:	23 kg
Material:	Aluminum, POM, Stainless Steel
Power Input:	110V - 240V
Environmental Station:	1 Point
Min Power Consumption:	10W @ 230V (standby mode)
Peak Load:	480W @ 230V
Max RPM:	Winch V5 - up to 135 Winch V6 - up to 60

Installation options:

V-Shape Installation

- Keeps the camera stable and pointed in one direction
- Best for clear, steady views with minimal rotation

T-Shape Installation

- Reduces camera movements caused by rope swings and fish impacts.
- Ideal when greater stability and motion control are needed.

